

# SERIES 05/06 MEDIUM DUTY STAINLESS

Capacities to 300 lbs.

## Standard Features

- All Stainless Steel Construction
- Load Bearings - Two full independent rows of stainless ball bearings
- Sealed Swivel Assembly
- Non Magnetic
- USDA/FDA Approved

## Optional Features

- Wheel Brake - (Suffix-WB)



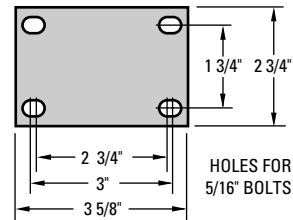
05-KTP-5-SS

**APPLICATIONS:**  
Food service, pharmaceutical  
and medical environments.

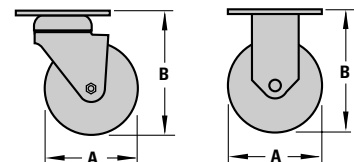


06-KTP-4-SS

## Standard Top Plate



Wheel Specifications						Caster Specifications						Part Number	
Dia. "A" Inches (mm)	Tread Inches (mm)	Wheel Composition	Ref. to Page	Bearing Type	Axle Dia. Inches (mm)	Load Capacity lbs. (KGS)	Overall Height "B" Inches (mm)	Swivel Radius Inches (mm)	Attach. Bolt Inches (mm)	Approx. Shipping Wt.		Swivel Caster	Rigid Caster
										Swivel lbs. (KGS)	Rigid lbs. (KGS)		
3 (75) (32)	1 3/8 (35)	Santoprene (Polyolefin Core)	72	Delrin	3/8 (10)	200 (90)	4 5/16 (109)	2 3/4 (70)	5/16 (8)	1.8 (.81)	1.3 (.63)	05-SPD-3-SS	06-SPD-3-SS
		Polyurethane (Polyolefin Core)	80	Delrin		250 (112)				1.8 (.81)	1.3 (.63)	05-PPD-3-SS	06-PPD-3-SS
	1 1/4 (32)	Polyolefin (Wt)	81	Plain		270 (121)				1.4 (.72)	1.1 (.54)	05-PWP-3-SS	06-PWP-3-SS
		Solid Urethane	77	Plain		270 (121)				1.4 (.72)	1.1 (.54)	05-KTP-3-SS	06-KTP-3-SS
3 1/2 (89)	1 3/8 (35)	Santoprene (Polyolefin Core)	72	Delrin	3/8 (10)	200 (90)	4 15/16 (125)	3 (76)	5/16 (8)	1.8 (.81)	1.4 (.63)	05-SPD-35-SS	06-SPD-35-SS
		Polyurethane (Polyolefin Core)	80	Delrin		250 (112)				1.8 (.81)	1.4 (.63)	05-PPD-35-SS	06-PPD-35-SS
	1 1/4 (32)	Polyolefin (Wt)	81	Plain		270 (121)				1.6 (.72)	1.2 (.54)	05-PWP-35-SS	06-PWP-35-SS
4 (102)	1 3/8 (35)	Santoprene (Polyolefin Core)	72	Delrin	3/8 (10)	200 (90)	5 1/4 (133)	3 1/4 (83)	5/16 (8)	2.1 (.95)	1.7 (.77)	05-SPD-4-SS	06-SPD-4-SS
		Polyurethane (Polyolefin Core)	80	Delrin		250 (112)				2.1 (.95)	2.1 (.95)	05-PPD-4-SS	06-PPD-4-SS
	1 1/4 (32)	Polyolefin (Wt)	81	Plain		275 (124)				1.9 (.86)	1.5 (.68)	05-PWP-4-SS	06-PWP-4-SS
		Solid Urethane	77	Plain		275 (124)				2.2 (1.0)	1.8 (.81)	05-KTP-4-SS	06-KTP-4-SS
5 (127)	1 3/8 (35)	Santoprene (Polyolefin Core)	72	Delrin	3/8 (10)	225 (101)	6 9/16 (167)	4 3/4 (121)	5/16 (8)	2.9 (1.3)	2.5 (1.1)	05-SPD-5-SS	06-SPD-5-SS
		Polyurethane (Polyolefin Core)	80	Delrin		275 (124)				2.9 (1.3)	2.5 (1.1)	05-PPD-5-SS	06-PPD-5-SS
	1 1/4 (32)	Polyolefin (Wt)	81	Plain		275 (124)				2.5 (1.1)	2.1 (.95)	05-PWP-5-SS	06-PWP-5-SS
		Solid Urethane	77	Plain		300 (135)				2.9 (1.3)	2.5 (1.1)	05-KTP-5-SS	06-KTP-5-SS

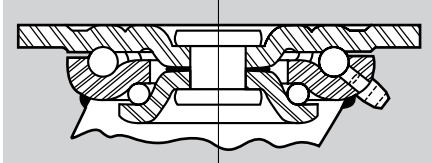


# SERIES 1 MEDIUM HEAVY DUTY STAINLESS

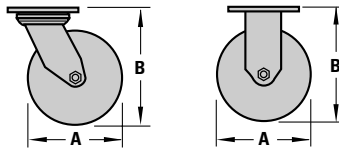
Capacities to 1000 lbs.

## Standard Features

- All Stainless Steel Construction



- Sealed Swivel Assembly
- Load Bearing - Two full independent rows of stainless steel ball bearings
- USDA/FDA Approved
- Non Magnetic

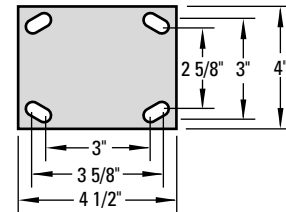


S162D-KT-SS



R152D-PP-SS

## Standard Top Plate



## Optional Features

- Wheel Brakes (Suffix-WB)
- Optional Top plates Available.
- All Stainless Steel Wheel
- Swivel Lock (Suffix-SL)

Wheel Specifications						Caster Specifications					Part Number		
Dia. "A" Inches (mm)	Tread Inches (mm)	Wheel Composition	Ref. to Page	Bearing Type	Axle Dia. Inches (mm)	Load Capacity lbs. (KGS)	Overall Height "B" Inches (mm)	Swivel Radius Inches (mm)	Attach. Bolt Inches (mm)	Approx. Shipping Wt.		Swivel Caster	Rigid Caster
										Swivel lbs. (KGS)	Rigid lbs. (KGS)		
4 (102)	2 (50)	Santoprene (Polyolefin Core)	72	Delrin	1/2 (13)	400 (180)	5 5/8 (143)	3 9/16 (90)	3/8 (10)	5.0 (2.25)	4.5 (2.2)	S142D-SP-SS	R142D-SP-SS
		Polyurethane (Polyolefin Core)	80	Delrin		700 (315)				6.0 (2.7)	5.5 (2.5)	S142D-PP-SS	R142D-PP-SS
		Polyolefin (Wt)	81	Delrin		450 (202)				5.5 (2.5)	5.0 (2.3)	S142D-PW-SS	R142D-PW-SS
		Solid Urethane	77	Delrin		700 (315)				6.5 (2.9)	6.0 (2.7)	S142D-KT-SS	R142D-KT-SS
5 (127)	2 (50)	Santoprene (Polyolefin Core)	72	Delrin	1/2 (13)	450 (202)	6 1/2 (165)	4 1/4 (108)	3/8 (10)	6.5 (3.0)	6.0 (2.7)	S152D-SP-SS	R152D-SP-SS
		Polyurethane (Polyolefin Core)	80	Delrin		750 (337)				6.5 (3.0)	6.0 (2.7)	S152D-PP-SS	R152D-PP-SS
		Polyolefin (Wt)	81	Delrin		600 (270)				6.0 (2.7)	5.5 (2.5)	S152D-PW-SS	R152D-PW-SS
		Solid Urethane	77	Delrin		900 (405)				7.0 (3.2)	6.5 (3.0)	S152D-KT-SS	R152D-KT-SS
6 (152)	2 (50)	Santoprene (Polyolefin Core)	72	Delrin	1/2 (13)	550 (247)	7 1/2 (191)	5 (127)	3/8 (10)	7.0 (3.2)	6.0 (2.7)	S162D-SP-SS	R162D-SP-SS
		Polyurethane (Polyolefin Core)	80	Delrin		900 (405)				7.0 (3.2)	6.0 (2.7)	S162D-PP-SS	R162D-PP-SS
		Polyolefin (Wt)	81	Delrin		650 (292)				6.5 (2.9)	5.5 (2.5)	S162D-PW-SS	R162D-PW-SS
		Solid Urethane	77	Delrin		900 (405)				7.5 (3.4)	6.5 (2.9)	S162D-KT-SS	R162D-KT-SS
8 (203)	2 (50)	Santoprene (Polyolefin Core)	72	Delrin	1/2 (13)	700 (315)	9 1/2 (241)	6 1/8 (156)	3/8 (10)	7.5 (3.4)	6.5 (2.9)	S182D-SP-SS	R182D-SP-SS
		Polyurethane (Polyolefin Core)	80	Delrin		900 (405)				7.5 (3.4)	6.5 (2.9)	S182D-PP-SS	R182D-PP-SS
		Polyolefin (Wt)	81	Delrin		700 (315)				6.5 (2.9)	5.5 (2.5)	S182D-PW-SS	R182D-PW-SS
		Solid Urethane	77	Delrin		1000 (450)				8.5 (3.8)	7.5 (3.4)	S182D-KT-SS	R182D-KT-SS